
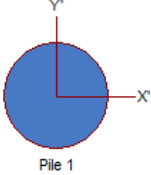


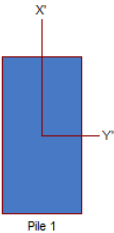

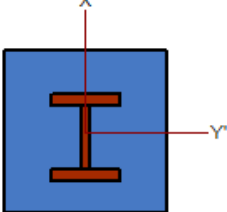
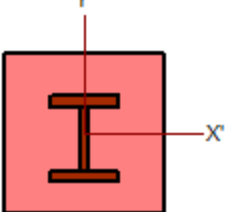
RSPile 3.006: New Local Axis Convention

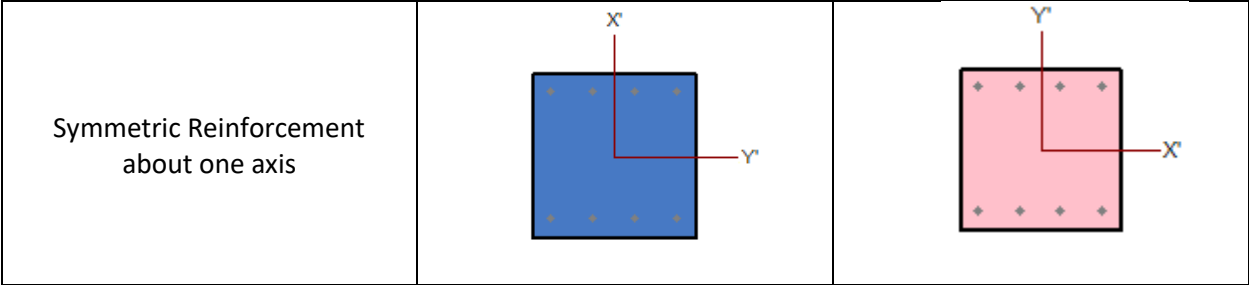
The local axis convention changes in RSPile 3.006 to a more familiar axis notation. The Y' axis is now aligned to the global Y and the X' axis is now aligned to the global X axis. The figure below illustrates the difference between the **OLD** convention used and the **NEW** convention.

OLD	NEW
	

1. New section geometry orientation

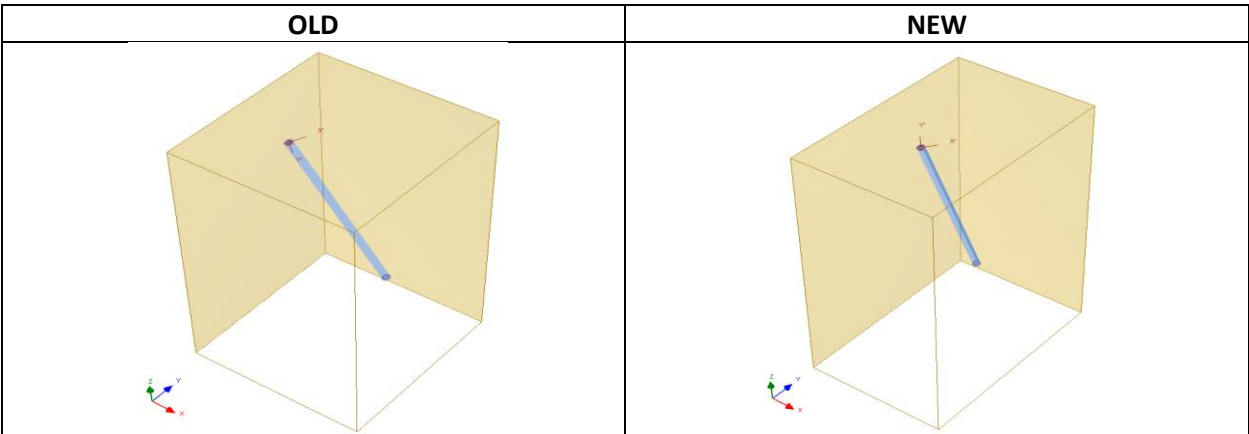
The new local axis convention affects the orientation of previously designed sections. Below are 3 examples:

Description	OLD	NEW
Rectangular Section		
I-Beam Reinforcement		



2. New 3D geometry orientation

The new local axis convention affects the orientation of previously battered piles. Below is an example for an arbitrarily oriented pile.



3. New results orientation

The new local axis convention affects the orientation of previous local results. The computed results affected by the new axis convention are showed below:

- ↑ Displacement X
- ↑ Displacement Y
- ⊙ Rotation X
- ⊙ Rotation Y
- ↔ Beam Shear Force X'
- ↔ Beam Shear Force Y'
- ⊕ Beam Moment X'Z'
- ⊕ Beam Moment Y'Z'
- P Soil Reaction Force X'
- P Soil Reaction Force Y'
- k Soil Stiffness X'
- k Soil Stiffness Y'