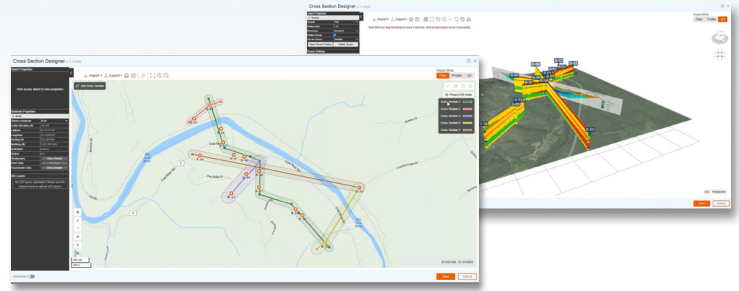


## WEBINAR

# Designing Cross-Sections and 3D Visualization Using RSLog



**Q1: Can you use RSLog for tunnel cross-sections? Input tunnel 2D geometry within the cross-section?**

A1: Yes, in order to do that you need to enter proper coordinates and inclination of borehole during data entry. A slide in our presentation shows utilizing cross-section designer for a tunnel project.

**Q2: Can you import data from AGS data? PS gINT is being discontinued.**

A2: Yes. RSLog has an Excel add-in for handling AGS data; please see <https://www.rocscience.com/help/rslog/documentation/ags-data/overview>

**Q3: Can you display a CPT log next to a borehole?**

A3: In the borehole log you can add a column for Graph (customizable) to overlay multiple CPT parameters (e.g. qc, fs) on the same graph. In cross-section designer, you can show one graph on the left and one graph on the right side of the borehole. Each graph can present data from any lab tests or field tests.

**Q4: Can you include SPT N value next to all stick logs? Just numbers and not charts or tables.**

A4: Yes you can. In order to do that: 1) select a borehole (click), 2) open the Test Results property dialog from the left panel, 3) under the Field Tests select SPT test, 4) once the SPT graph appears, click on it and select Display Options property from the left panel, 5) select Table from the dialog. This will show SPT data as a table beside the borehole.

**Q5: Can you view the shapes (e.g. building#1) when you are on 3D mode?**

A5: This feature is being worked on and will be available soon.

**Q6: Can you put RQD, Fracture frequency and other rock mass parameters next to the borehole? Where is the size?**

A6: We can add this feature to our cross-section designer. Please share a few examples with us at [DemoRSLog@rocscience.com](mailto:DemoRSLog@rocscience.com)

**Q7: Can RSLog interact with Openground?**

A7: We have no such feature at the moment. However, we can help you import your OpenGround borehole data to RSLog.

**Q8: How do I remove the standpipe piezometer stick if I do not want to see it on my cross section?**

A8: On the Profile view, select Groundwater Options from the left panel. Then click Hide under Piezometers section.

**Q9: Is the cross section designer preloaded with British Standard borehole legends?**

A9: The hatch patterns are those widely used in geotechnical engineering for USCS material types. For AASHTO, user can select a USCS hatch pattern for each soil type. In addition, RSLog includes about 160 customized AGS hatch patterns.

**Q10: Is it possible to import a topographical (ground level) surface that can be interrogated along each geological section?**

A10: Importing a 3D topographical surface is in our roadmap for near future. Importing 2D profile of the ground surface is available (CSV import) in the Profile view.